

November 2009

Longbridge Lane Road Works



What changes will we be making to the roads in Longbridge?

St. Modwen is investing £4 million to improve Longbridge Lane from its junction with the A38 (Bristol Road South) up to the junction with Tessall Lane.

Birmingham City Council has already granted St. Modwen planning permission for this work. We are now developing the detailed proposals with Birmingham City Council for the following highway improvements:

- A** Widening Longbridge Lane to four lanes on the west bound carriageway at its junction with the A38 (Bristol Road South)
- B** Providing three lanes on the Longbridge Lane east bound and west bound carriageways to provide filter lanes at Devon Way
- C** Creating a new signal controlled junction at Devon Way
- D** Creating a new access road to the Bournville College campus opposite Devon Way
- E** New/upgraded signal controlled pedestrian crossings at the new Devon Way crossroads, Longbridge Lane junction with the A38 and on the A38 in front of the Innovation Centre building.
- F** Upgraded facilities on both sides of the carriageways for pedestrians and cyclists
- G** Tessall Lane remains unaffected

Why do we need to do this work?

Bournville College has confirmed it will be moving to a new £66 million building at Longbridge, and from the end of 2009 you will see construction work get under way on site as we start to build the new college off Longbridge Lane.

The road works will improve links between the college and the A38 Bristol Road South. They will also improve the flow of traffic along Longbridge Lane; and will help to keep the roads, pathways and cycle routes as safe as possible for the public.

How long will the road works take to complete?

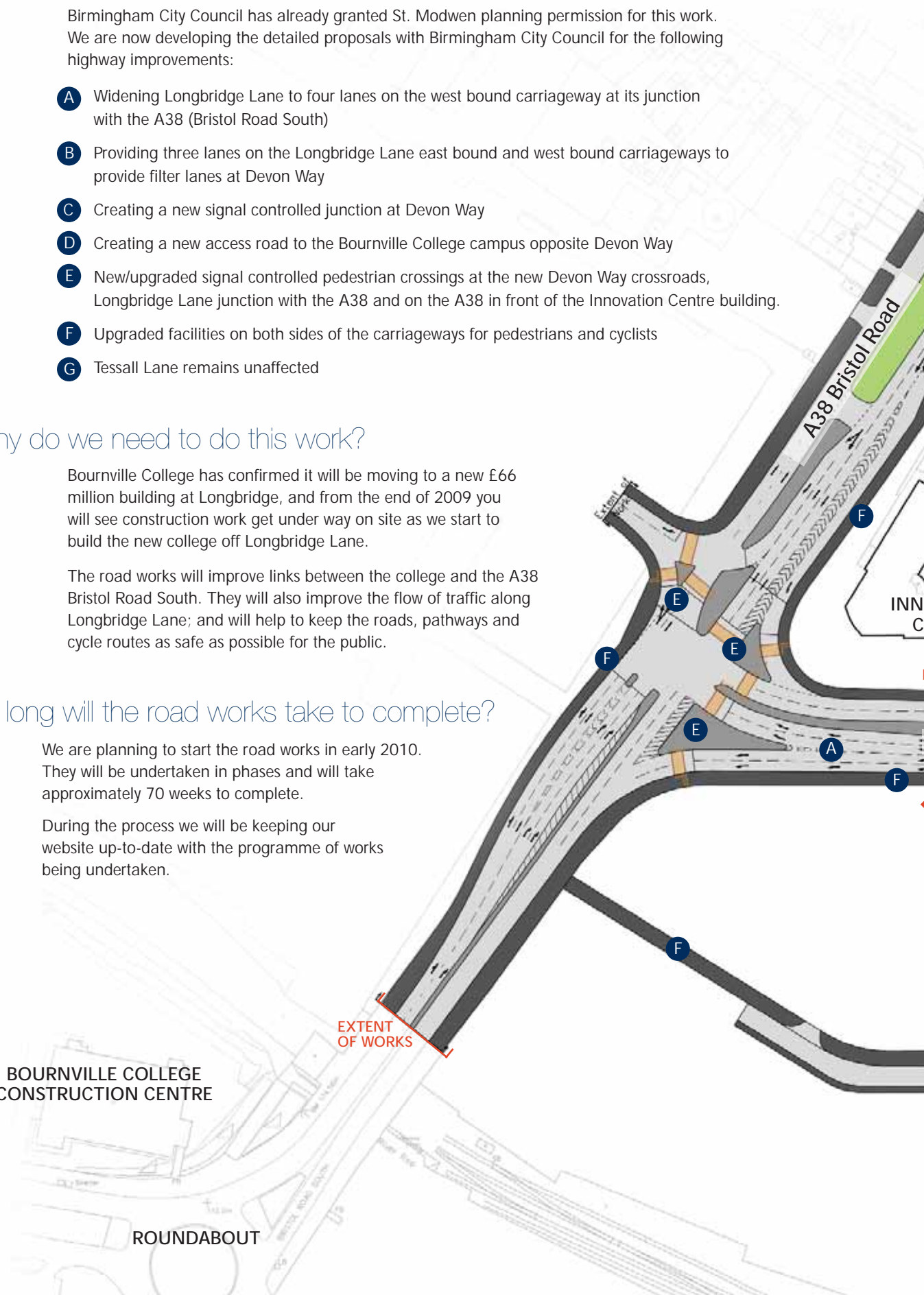
We are planning to start the road works in early 2010. They will be undertaken in phases and will take approximately 70 weeks to complete.

During the process we will be keeping our website up-to-date with the programme of works being undertaken.

**BOURNVILLE COLLEGE
CONSTRUCTION CENTRE**

ROUNDAABOUT

**EXTENT
OF WORKS**



Will there be any disruption for those who live, work or travel around the area?

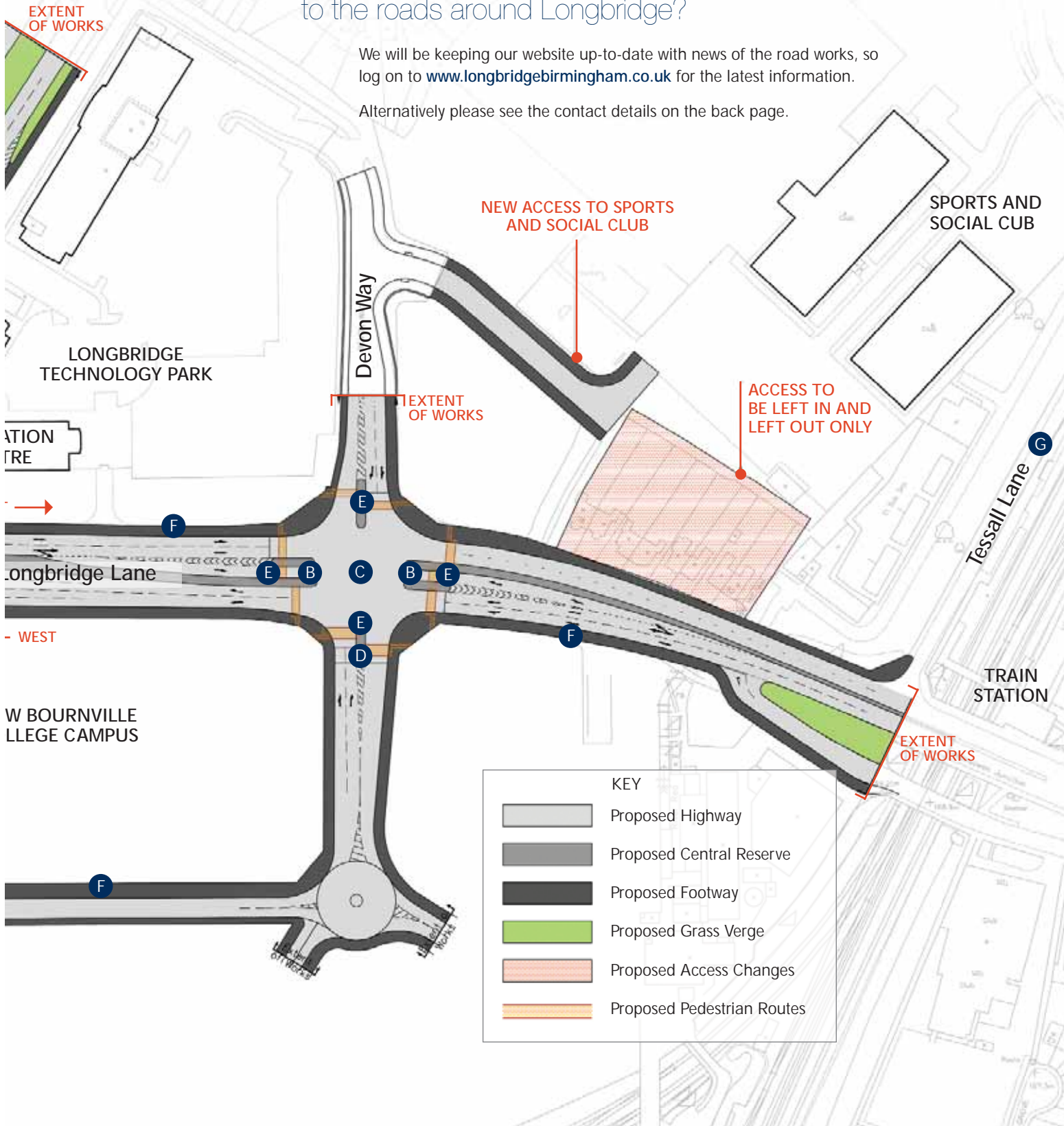
On the plan below, we have highlighted the properties whose access arrangement will change as a result of these improvements.

Our aim is to keep any disruption and inconvenience to a minimum, and we have signed up to the Considerate Constructors Scheme to signal our commitment to this approach. Works will be coordinated through Birmingham City Council to ensure that any traffic management systems will minimise disruption to road users and local residents.

How can I keep up-to-date with what is happening to the roads around Longbridge?

We will be keeping our website up-to-date with news of the road works, so log on to www.longbridgebirmingham.co.uk for the latest information.

Alternatively please see the contact details on the back page.



Construction of the new £66 million
Bournville College has started



Thank you for taking the time to read through our plans for improvements to Longbridge Lane. We would appreciate it if you could now take a few minutes to share your views, as your feedback is very important to us. You can do this in any one of the following ways:

- Complete this form and place it in the suggestion box provided at the Innovation Centre, Longbridge Technology Park
- Complete this form and post it St. Modwen, c/o Core, 4th Floor, Four Brindleyplace, Birmingham, B1 2JF
- Download this form at www.longbridgebirmingham.co.uk and email it to longbridge@core-marketing.co.uk

With regards to the plans, are there any particular aspects which you like or dislike and why?
(use another piece of paper if necessary)

If you have any other comments please complete the section below (use another piece of paper if necessary)

Optional – Personal Details

We would be grateful if you could complete the personal details section below. This is optional and will help us identify which groups of people have taken part in the consultation process.

The information you provide will only be used for this project. The information will not be used for any other purpose.

Name _____

Company (if applicable) _____

Address _____

Email Address _____

Please tick all applicable boxes: I work nearby I live nearby I have local business interests

Age: under 25 25-44 45-64 65+ Sex: Male Female

What is happening at Longbridge?

The £1 billion regeneration of Longbridge is a project by developer St. Modwen and joint landowner Advantage West Midlands. 2009 has been an exciting year, and we are now entering the phases of the scheme where you will begin to see the transformation of the area happening around you.

This year's landmarks at Longbridge:

- In January, we changed our plans for the former General Office Buildings on Lickey Road, following consultation with the public at the end of 2008. We set out our proposed changes in a leaflet which was delivered to over 1,300 homes.
- In February, the Longbridge Area Action Plan was approved by a central government Planning Inspector, giving St. Modwen and Advantage West Midlands the go-ahead to progress the regeneration of Longbridge. The Longbridge Area Action Plan now paves the way for Birmingham City Council and Bromsgrove District Council to approve the four major planning applications that St. Modwen submitted in May 2008.
- The Innovation Centre at Longbridge Technology Park is now 90 per cent let, and has around 40 occupiers employing approximately 200 people.
- In August we completed the ground-clearing work for Longbridge North to prepare the site for Bournville College and the new Longbridge Town Centre. We removed thousands of tonnes of soil in the process – enough to fill 35 Olympic-sized swimming pools.
- In October we appointed Holder Mathias Architects to create a vision for the £100 million town centre at Longbridge. The first phase of this 15 acre scheme is likely to include a food store, retail units, hotel, car park, and the four acre Austin Park.

Contact Details

We are very interested in what you have to say about our plans for improving Longbridge Lane. Together with local councillors and your local MP, we want to continue to talk to you and keep you informed of our plans. If you would like to comment on any of the information given in this leaflet please use the attached form. Alternatively you can do so in the following ways:

You can send an email to Longbridge@core-marketing.co.uk or you can write to St. Modwen c/o Core, 4th Floor, Four Brindleyplace, Birmingham B1 2JF

Councillors contact details

Longbridge Ward - Cllr Ken Wood, Cllr Sue Barton and Cllr Keith Barton

Northfield Ward - Cllr Randal Brew, Cllr Reg Corns and Cllr Les Lawrence

All can be contacted c/o Council House, Victoria Square, Birmingham B1 1BB

MP contact details

Richard Burden MP, House of Commons, London, SW1A 0AA

Highways contact details

Dave Woolley/Rebecca Birch, Halcrow Yolles, Redhill House, 227 London Road, Worcester, WR5 2JG
Tel: 01905 361300